

PARTITURA -Ariñ-Ariñ- Kanpaitxo-

Xistu I $\frac{2}{4}$ $\text{F}\sharp$

Xistu II $\frac{2}{4}$ $\text{F}\sharp$

Silbota $\frac{2}{4}$ $\text{F}\sharp$

Ia IIa

Fin P P

Ia IIa IIa

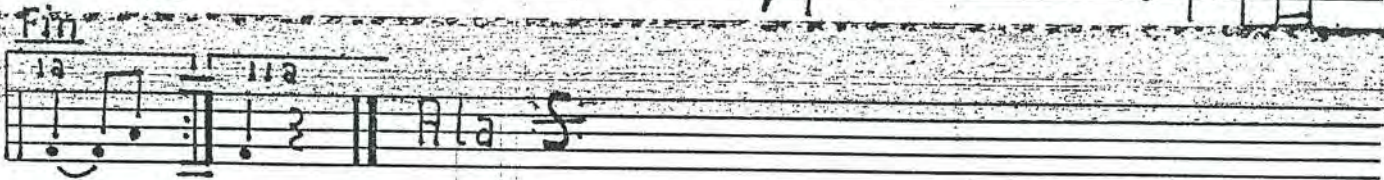
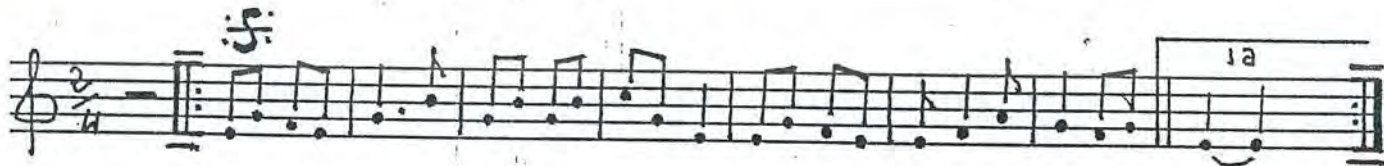
Fandango eta Ariñ-Ariñ-Moldaketa

Demetrio Iriarte.

Existu! Ariñ-Ariñ = Kanpaitxo = Mta: D. Iriarte



Xistu !!^o Arin-Arin = Kanpaitxo = Ma: D. Iriarte



Silbote Arin-Arin = Kanpaitxo = Molta: D. Iriarte

Handwritten musical notation for the first staff. It features a treble clef, a key signature of one sharp (F#), and a 2/4 time signature. The music begins with a repeat sign and a dynamic marking of 'f'. It contains several measures with eighth and sixteenth notes, some grouped with slurs and a '3' indicating a triplet. The piece concludes with a double bar line, a repeat sign, and the word 'Fin' written below.

Handwritten musical notation for the second staff. It begins with a dynamic marking of 'p'. The notation includes eighth and sixteenth notes, with a triplet of eighth notes in the final measure. The piece ends with a double bar line, a repeat sign, and the word 'Ala' written below.

